

Rd Ff

N2SESW, E2SESESW 27-09-26 25ac

E2260

3

McCurtain Scattered

E2265

E2SESW 36-09-26 17ac

E2270

s2hene 01-10-26 20ac

w990' senw 01-10-26 33ac

nswne 01-10-26 10ac

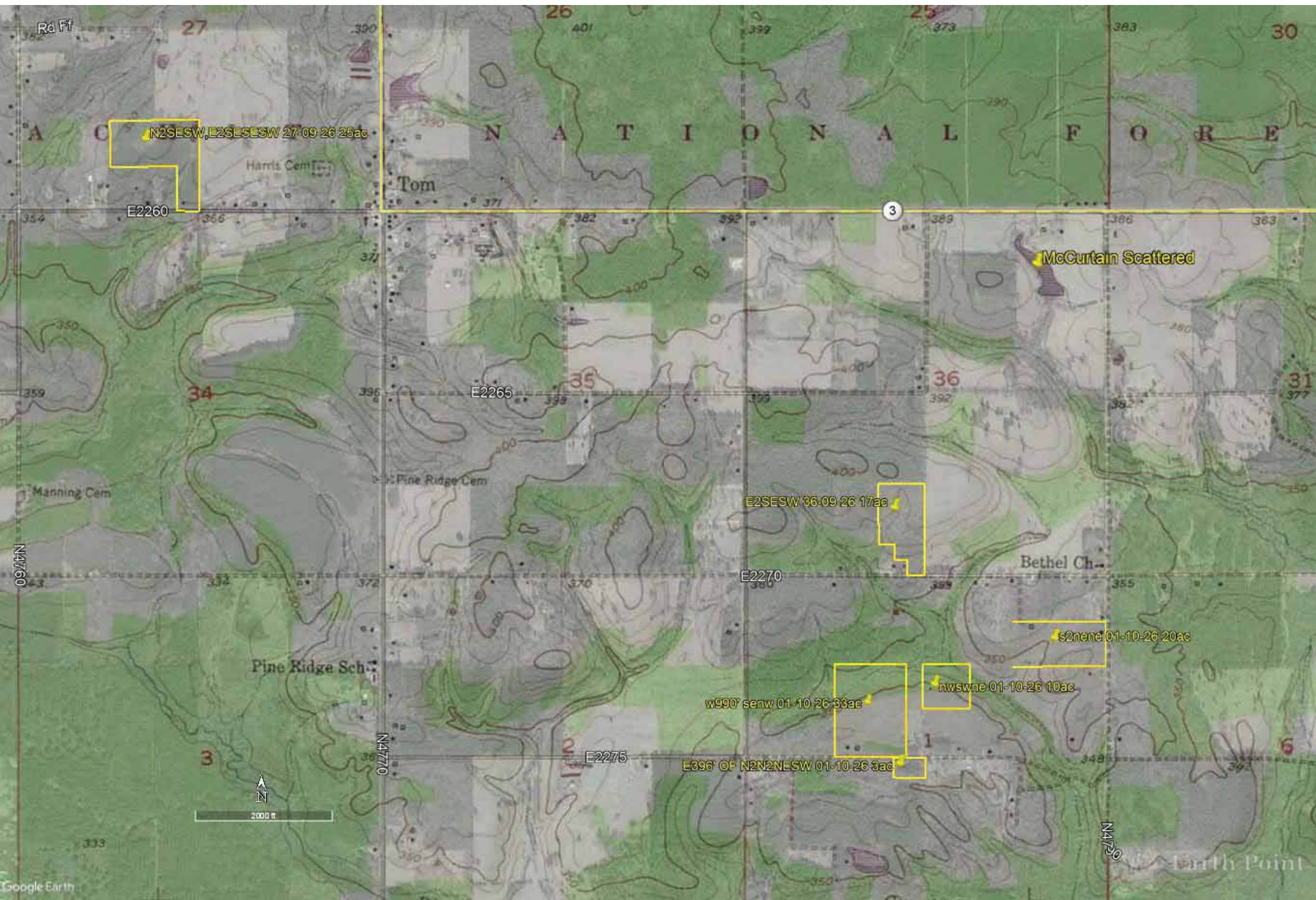
E396' OF N2N2NESW 01-10-26 3ac

E2275



N4770

N4750



N2SESW,E2SESESW 27-09-26 25ac

Tom

3

McCurtain Scattered

E2SESW 36-09-26 17ac

S2here 01-10-26 20ac

w990' senw 01-10-26 33ac

nwswe 01-10-26 10ac

E396' OF N2N2NESW 01-10-26 3ac



3000 ft

87