

**Reynolds Forestry Consulting – RFC, Inc.**

Bobby Weido, BBA  
Vice President  
Office: (870) 234-0200 (ext. 1206)

Web: [www.reynoldsforestry.com](http://www.reynoldsforestry.com)  
Email: [bobby@reynoldsforestry.com](mailto:bobby@reynoldsforestry.com)

Timber Marketing & Management Since 1993  
P.O. Box 1129  
Magnolia, AR 71754  
Fax: (870) 234-0089

**Timber Sale**  
Forest Grove 4  
Lafayette County, Arkansas

Sale Price: **\$15,000.**

Contact: Name: \_\_\_\_\_ Phone: \_\_\_\_\_  
Company: \_\_\_\_\_ Fax: \_\_\_\_\_  
Email: \_\_\_\_\_

Harvest Type: Harvest all merchantable timber on 4 acres. Tract boundary flagged with “RFC white flagging” (refer to aerial).

Inventory Method: Five 1/5<sup>th</sup> acre sample plots were placed on a 2x5 chain grid (one plot per acre).

**Timber Summary** (for additional details visit [www.reynoldsforestry.com](http://www.reynoldsforestry.com)):

<u>Product</u>	<u>Tree Count</u>	<u>Tons</u>	<u>Average Dbh</u>	<u>Dbh Range</u>	<u>Average Height</u>
Pine Sawtimber:	288	415	15.3”	10”-22”	3.5 Logs
Pine Pulpwood:	68	16	7.8”	6”- 8”	2.9 Logs
Hardwood Pulpwood:	96	28	8.3”	6”-12”	2.3 Logs

\* dbh = diameter at breast height (4.5 feet from stump).

Legal/Lines/Maps: Partial NE NW in Section 29 T18S R23W in Lafayette County, Arkansas containing 4 acres, more or less (refer to map).

Timber Deed: One year contract starting from date of acceptance.

Logging Conditions: Dry weather logging conditions.

Access: Access from Lafayette 73. A road will need to be pushed along east line of sellers adjoining 45 acres (refer to aerial).

Bid Receipt: Pay-as-Cut Bid Results will not be publicized. Bids received by mail, fax, phone, or email or at opening (confirmed upon receipt).

Payment & Closing: Within 30 days of bid opening or before. Closing administered by RFC.

Reservation: Seller reserves the right to reject any and/or all bids.

BMP Guidelines: Arkansas “Best Management Practices” are accepted logging guidelines.

If you have any questions or would like additional information, please call 870-234-0200 (ext. 1206).

Bobby Weido, BBA

Cc: Allen Nipper

Allen Nipper  
 Lafayette County, Arkansas  
 11/30/2007

Inventory Report  
 Forest Grove  
 50 Total Acres  
 4 Cruised Acres

RFC  
 P. O. Box 1129  
 Magnolia, AR 71754  
 (870) 234-0200

Pine Sawtimber

Diameter at 4.5'	Form Class	Merchantable Heights in 16 Foot Logs							
		1	1.5	2	2.5	3	3.5	4	4.5
10	82	0	8	12	12	0	4	0	
12	82	0	0	4	0	4	8	24	0
14	82	0	4	8	4	0	16	16	16
16	82	0	0	4	4	4	12	24	12
18	82	0	0	0	0	0	8	32	4
20	82	0	0	0	0	0	16	0	8
22	82	0	0	0	0	8	12	0	0
<b>Total</b>	<b>0</b>	<b>12</b>	<b>28</b>	<b>20</b>	<b>16</b>	<b>76</b>	<b>96</b>	<b>40</b>	

Trees			
Total Trees	Per Acre	Total 16 ft. Logs	Average Logs/Tree
36	9.0	80	2.2
40	10.0	144	3.6
64	16.0	224	3.5
60	15.0	222	3.7
44	11.0	174	4.0
24	6.0	92	3.8
20	5.0	66	3.3
<b>288</b>	<b>72</b>	<b>1,002</b>	<b>3.5</b>

Doyle Log Rule (derived from CF)			
Total BF	Per Acre	Per Tree	Average BF/Log
1,046	262	29	13
3,024	756	76	21
7,796	1,949	122	35
11,495	2,874	192	52
12,526	3,132	285	72
8,966	2,242	374	97
9,169	2,292	458	139
<b>54,022</b>	<b>13,506</b>	<b>188</b>	<b>54</b>

Tons		
Tons Total	Tons Per Tree	Loads (28 Tons)
15	0.4	0.5
34	0.8	1.2
71	1.1	2.5
92	1.5	3.3
90	2.0	3.2
58	2.5	2.1
55	2.8	2.0
<b>415</b>	<b>1.4</b>	<b>15</b>

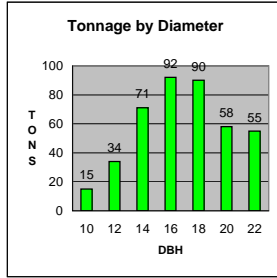
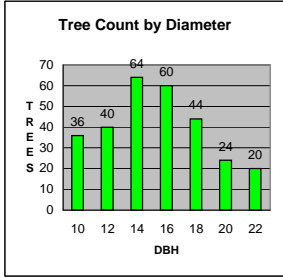
Cubic Feet		
CF Total	CF Per Acre	CF Per Tree
449	112	12
1,008	252	25
2,107	527	33
2,737	684	46
2,665	666	61
1,758	440	73
1,667	417	83
<b>12,391</b>	<b>3,098</b>	<b>43</b>

**Pine**  
 Sawtimber Summary

Average DBH (inches)  
 15.3

Average Height (16 Ft Logs)  
 3.5

Average Tons/Acre  
 104



Allen Nipper  
 Lafayette County, Arkansas  
 11/30/2007

Inventory Report  
 Forest Grove  
 50 Total Acres  
 4 Cruised Acres

RFC  
 P. O. Box 1129  
 Magnolia, AR 71754  
 (870) 234-0200

**Pine Pulpwood**

Diameter  
 at 4.5'

Merchantable Heights in 16 Foot Logs

Form Class	1	1.5	2	2.5	3	3.5
6	81	0	4	4	0	0
8	81	0	0	0	8	44
<b>Total</b>	0	4	4	8	44	8

Trees		Cords		Tons		
Total Trees	Per Acre	Total Cords	Per Acre	Tons Total	Tons Per Acre	Loads (28 Tons)
8	2.0	0.4	0.1	1	0.2	0.0
60	15.0	5.9	1.5	15	3.9	0.6
<b>68</b>	<b>17.0</b>	<b>6.2</b>	<b>1.6</b>	<b>16</b>	<b>4.1</b>	<b>0.6</b>

Allen Nipper  
 Lafayette County, Arkansas  
 11/30/2007

Inventory Report  
 Forest Grove  
 50 Total Acres  
 4 Cruised Acres

RFC  
 P. O. Box 1129  
 Magnolia, AR 71754  
 (870) 234-0200

**Hardwood Pulpwood**

		Merchantable Heights in 16 Foot Logs				
Diameter at 4.5'	Form					
	Class	1	1.5	2	2.5	3
6 & 8	76	0	12	24	24	4
10	76	0	0	4	8	4
12	76	0	0	4	4	8
<b>Total</b>		0	12	32	36	16

<b>Trees</b>		<b>Cords</b>		<b>Tons</b>		
Total Trees	Per Acre	Total Cords	Per Acre	Tons Total	Tons Per Acre	Loads (28 Tons)
64	16.0	5	1.3	13	3.3	0.5
16	4.0	2	0.6	6	1.5	0.2
16	4.0	3	0.9	9	2.3	0.3
<b>96</b>	<b>24.0</b>	<b>11</b>	<b>2.7</b>	<b>28</b>	<b>7.0</b>	<b>1.0</b>

## Inventory Utilizations

[www.reynoldsforestry.com](http://www.reynoldsforestry.com)

- \* Trees were inventoried by diameter at breast height (dbh; two inch classes at 4.5 feet).
- \* Pine Sawtimber dbh reported as  $\geq 10$  inches in two inch classes as follows: 10" = 9.1" - 11.0" dbh; 12" = 11.1" - 13.0" dbh, etc.
- \* Hardwood Sawtimber dbh reported as  $\geq 14$  inches in two inch classes as follows: 14" = 13.1" - 15.0" dbh; 16" = 15.1" - 17.0" dbh, etc.
- \* Tree heights were called in 16 feet logs to 6" top diameters outside bark (dob) for pine sawtimber, 9" top dob for hardwood sawtimber, 3" top dob for all pulpwood, or to merchantability (whichever occurred first).
- \* Saw-log merchantable heights are defined as: 1) to the heights specified above, or 2) the height where a whorl of 3 or more branches (whose diameters are equal to or greater than the diameter of the supporting stem) occurs within a 1-foot stem section if there is not a minimum of 8 feet of clear stem above the whorl. If a one foot section has three or more 3 inch diameter branches, regardless of the diameter, the height is called just below the one foot section.
- \* Cubic Feet were derived from USFS's "Stem Profile Equations for Southern Tree Species" by Clark, Souter and Schlaegel.
- \* Board Feet in Doyle was derived from the cubic feet using conversion tables in the Forest Service's "Service Forester's Handbook".
- \* Pine Sawtimber tons were derived from Cubic feet using 3.37 tons per Cunit (10" - 18" dbh) and 3.30 tons per Cunit (20" - 30" dbh).
- \* Hardwood Sawtimber tons were derived from Cubic feet using 3.65 tons per Cunit for Oak and 3.40 tons per Cunit for Misc. Hardwood.
- \* Pulpwood volumes were derived from cubic feet. Cords were derived using 78 cubic feet per cord for pine and 74 cubic feet per cord for hardwood. Cubic feet were converted to tons using 3.37 tons per cunit for pine and 3.4 tons per cunit for hardwood.
- \* Expected tonnage fluctuations occur between winter and summer logging due to sap flow and moisture composition.
- \* Pine sawtimber tree count and dbh are not guaranteed.



Sec 29,30, T18S R23W  
 Lafayette County, AR  
 Flight Date 3-1-2006  
 Map Date 3-18-2008

-  Sale Boundary
-  Not Part of Sale
-  RFC Sign
-  Road
-  Access Route

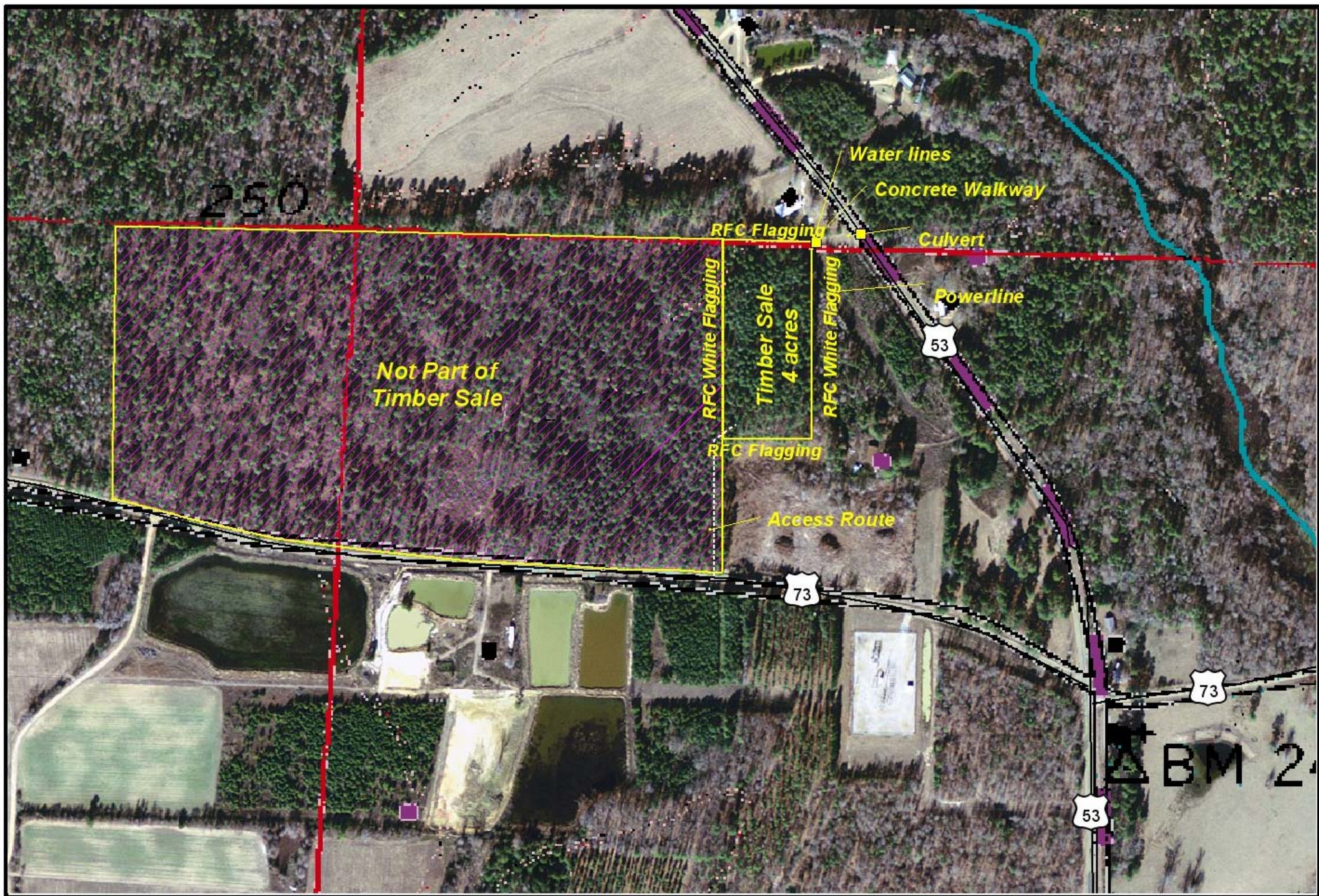
**Forest Grove 4**

0 0.1 Miles



Reynolds Forestry Consulting  
 P.O. Box 1129  
 Magnolia, AR 71754  
 (870) 234-0200  
 www.reynoldsforestry.com





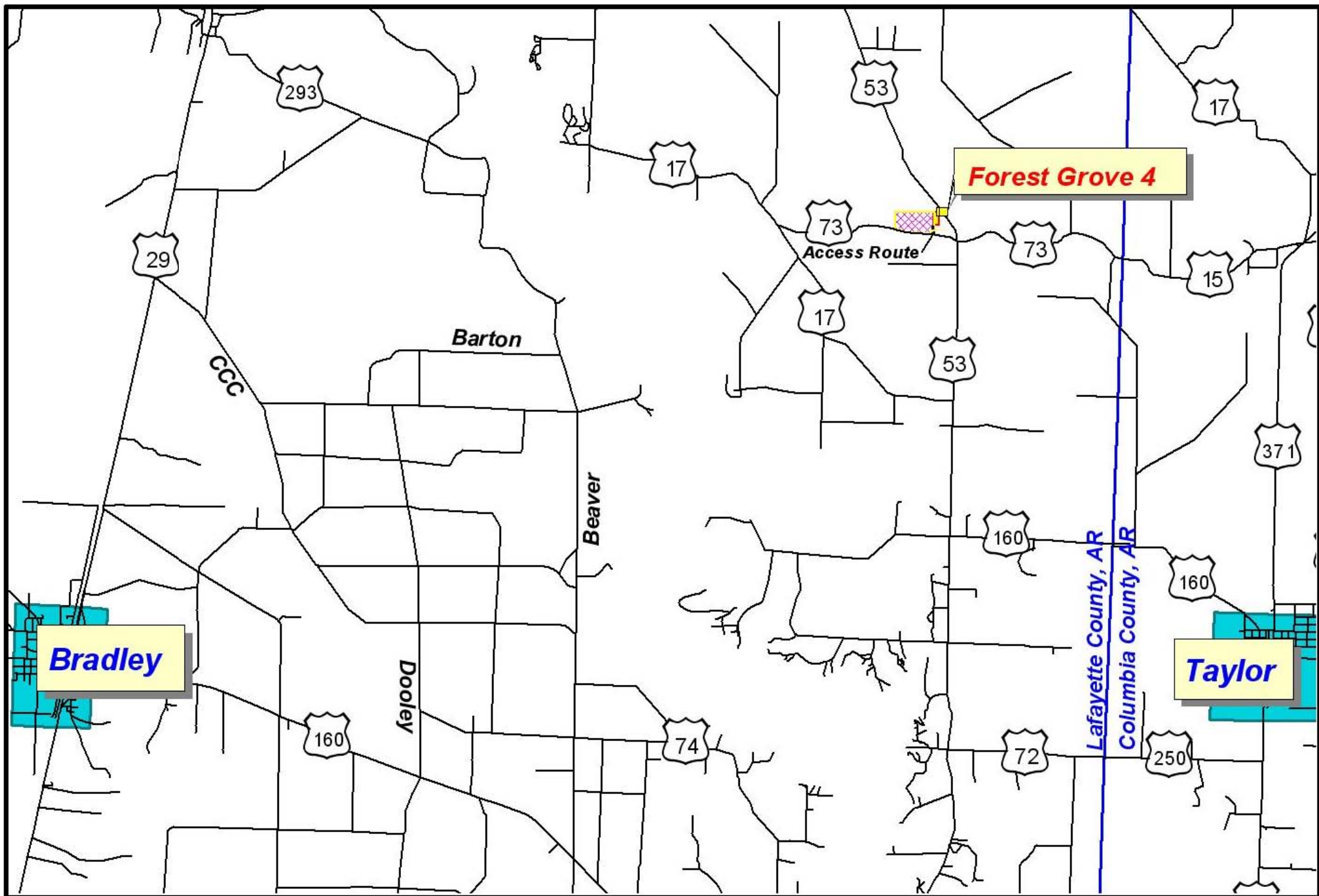
Sec 29,30, T18S R23W  
 Lafayette County, AR  
 Flight Date 3-1-2006  
 Map Date 3-18-2008

-  Sale Boundary
-  Not Part of Sale
-  RFC Sign
-  Road
-  Access Route

### Forest Grove 4



Reynolds Forestry Consulting  
 P.O. Box 1129  
 Magnolia, AR 71754  
 (870) 234-0200  
 www.reynoldsforestry.com



Sec 29,30, T18S R23W  
 Lafayette County, AR  
 Flight Date 3-1-2006  
 Map Date 3-18-2008

-  Sale Boundary
-  Not Part of Sale
-  RFC Sign
-  Road
-  Access Route

### Forest Grove 4

0  2 Miles

Reynolds Forestry Consulting  
 P.O. Box 1129  
 Magnolia, AR 71754  
 (870) 234-0200  
[www.reynoldsforestry.com](http://www.reynoldsforestry.com)